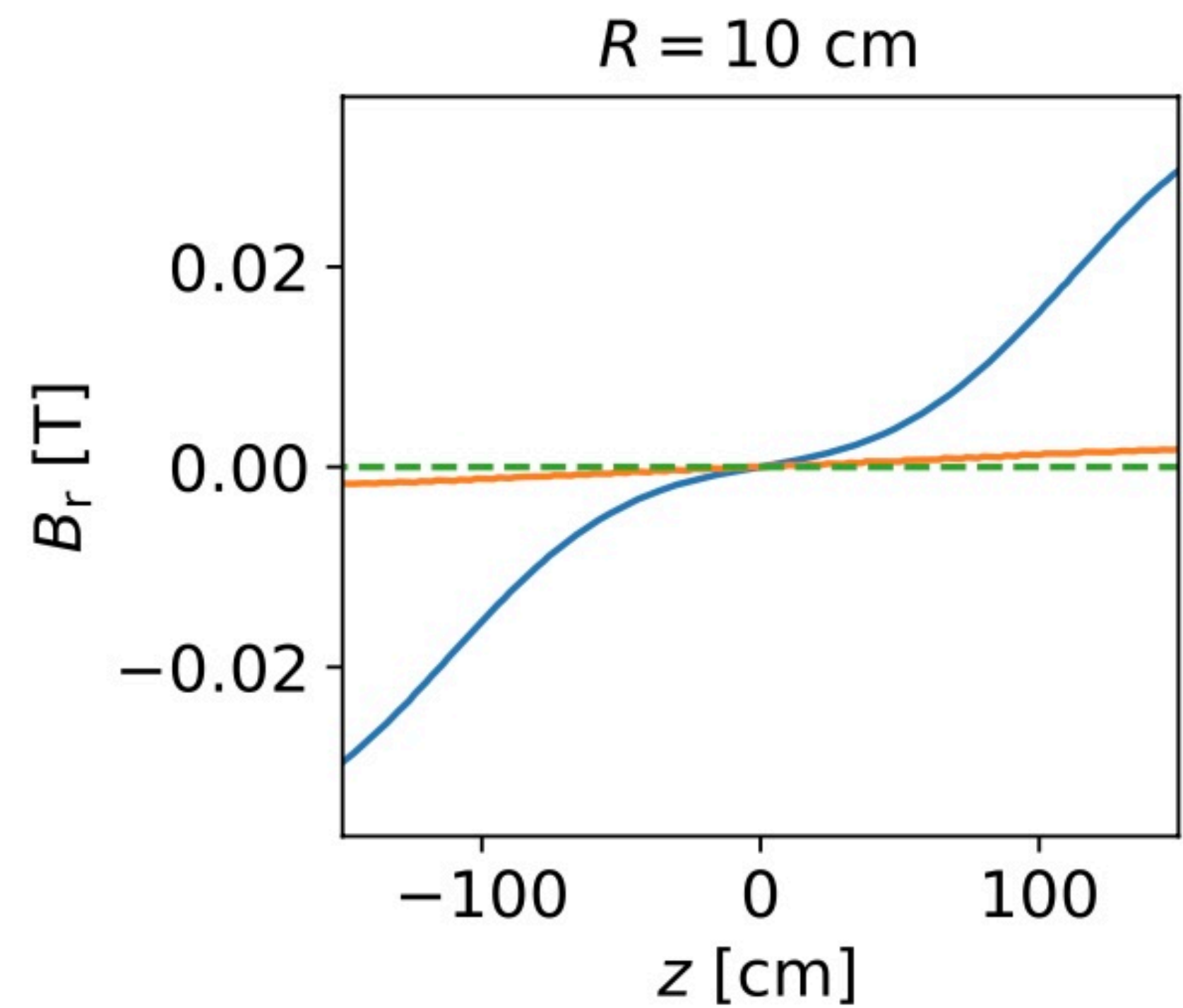
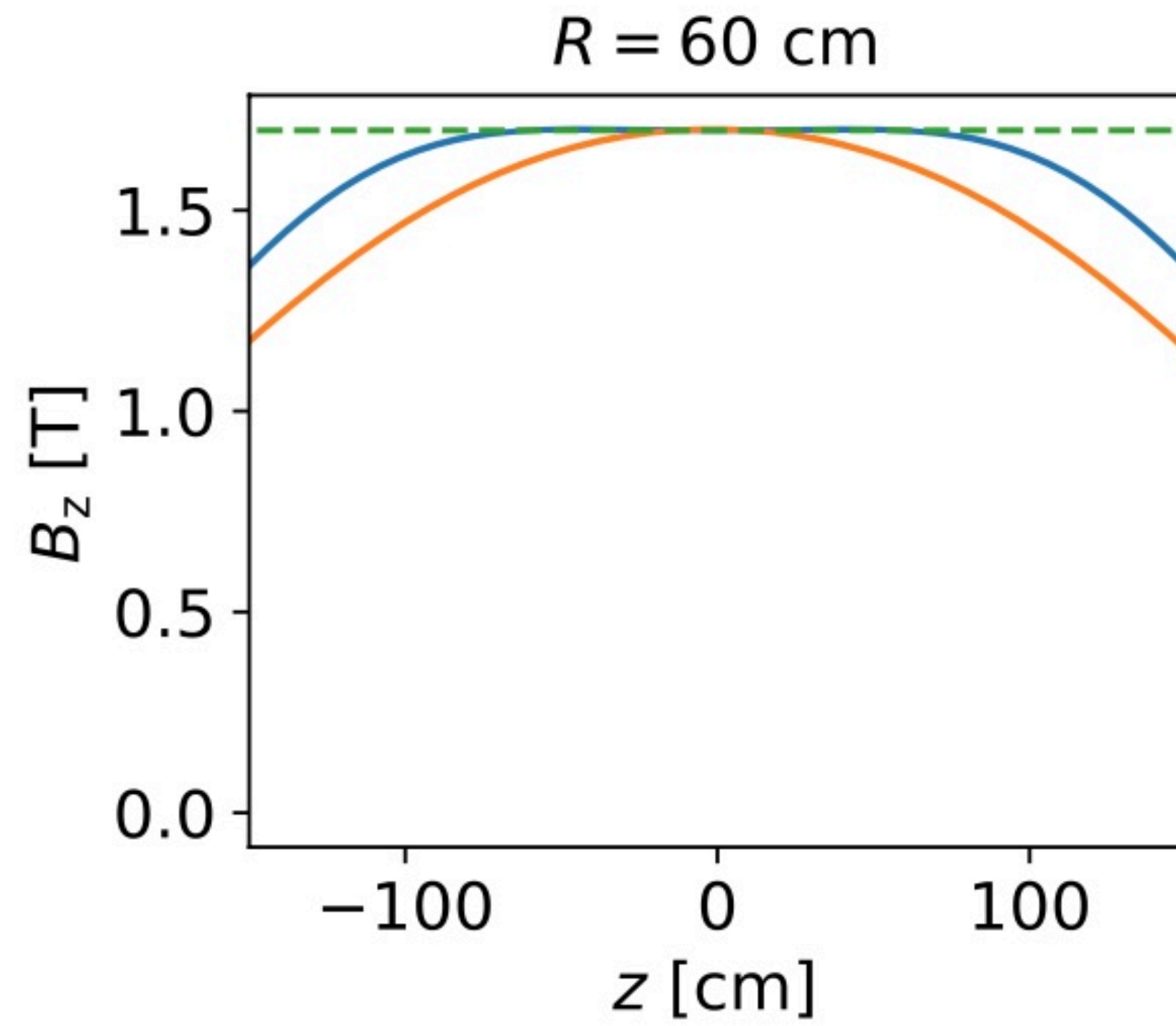
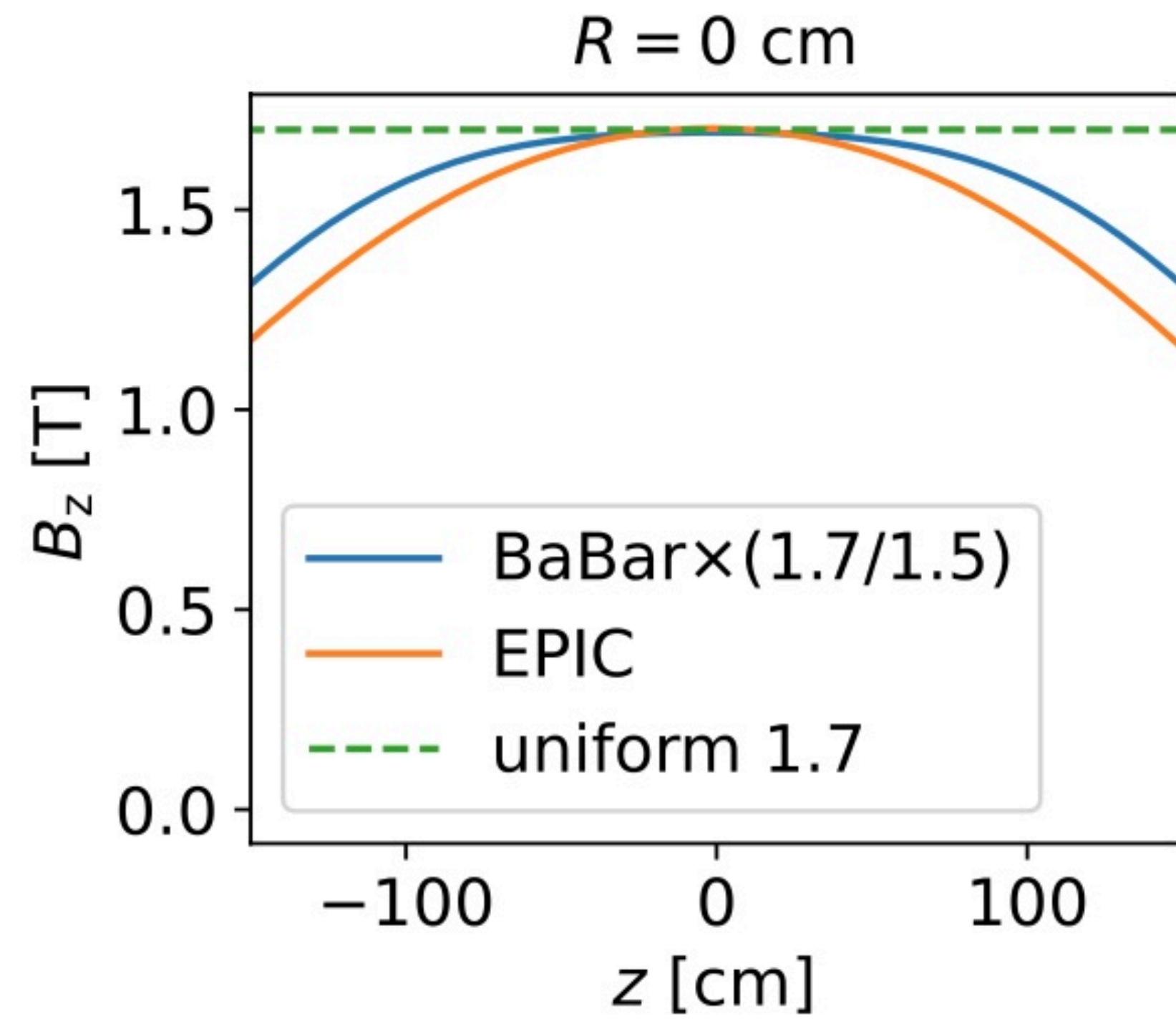


EPIC Magnetic-Field Map - Update

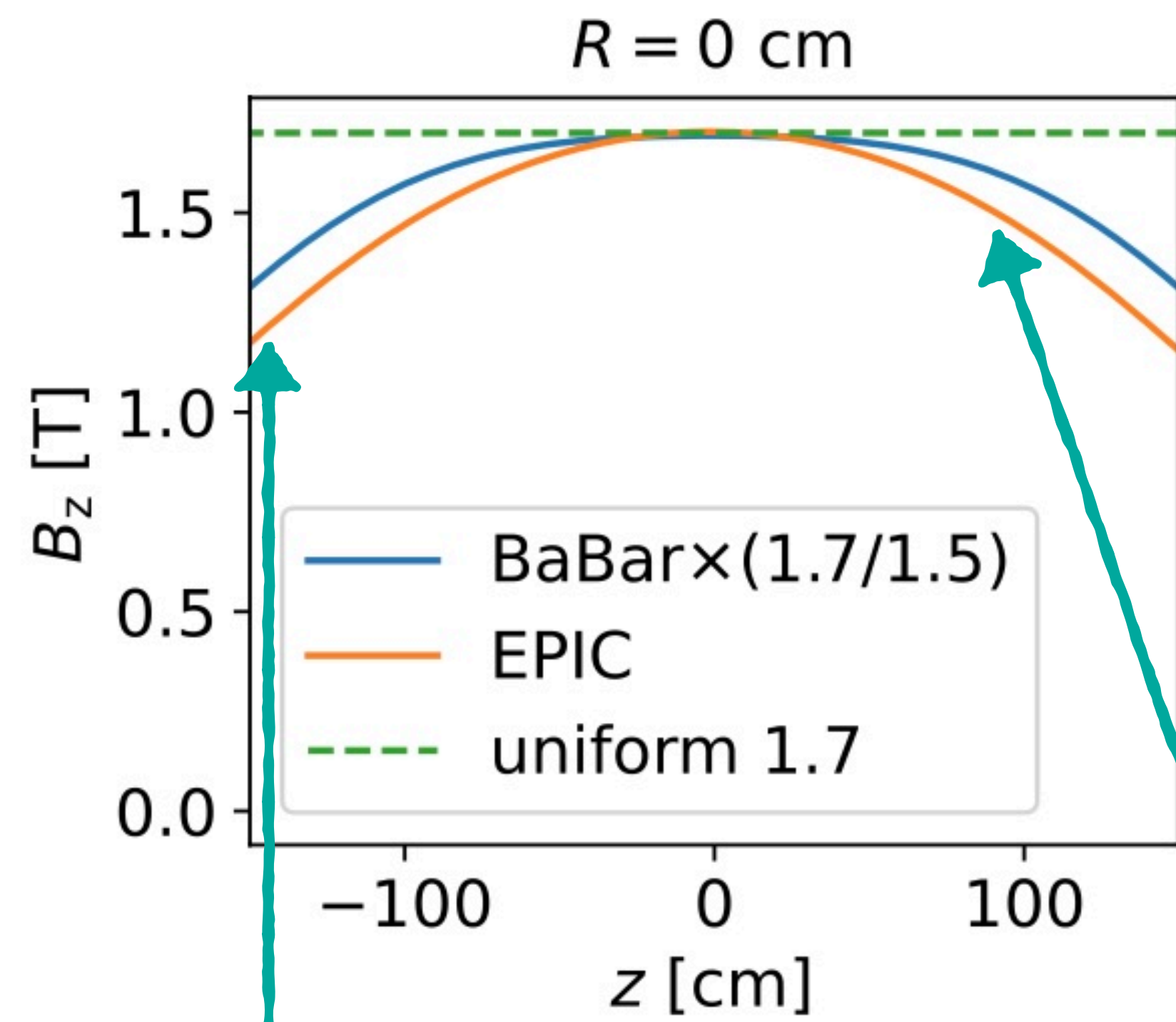


Rey Cruz-Torres
EIC RNC Meeting
11/15/2022

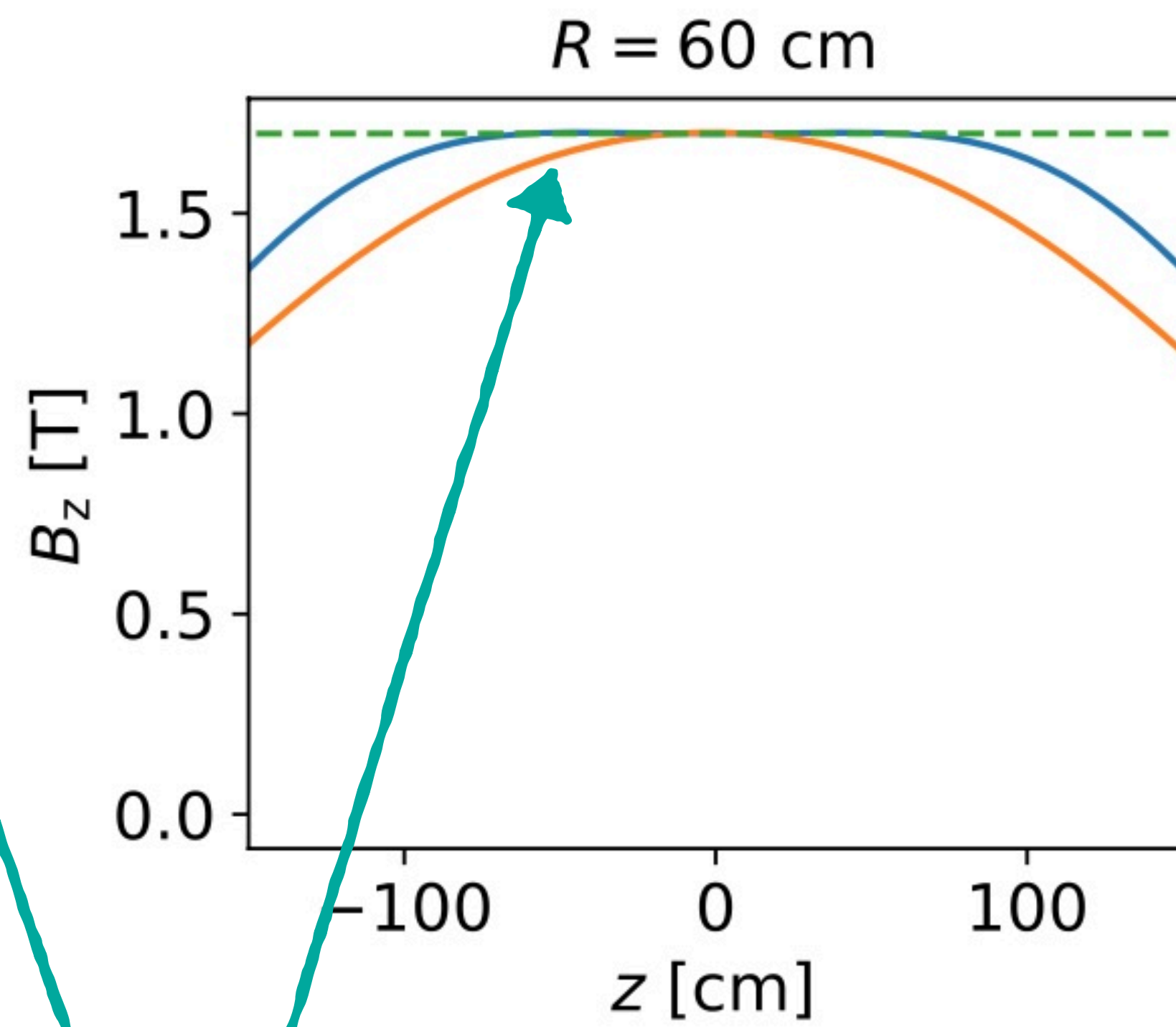
To recap



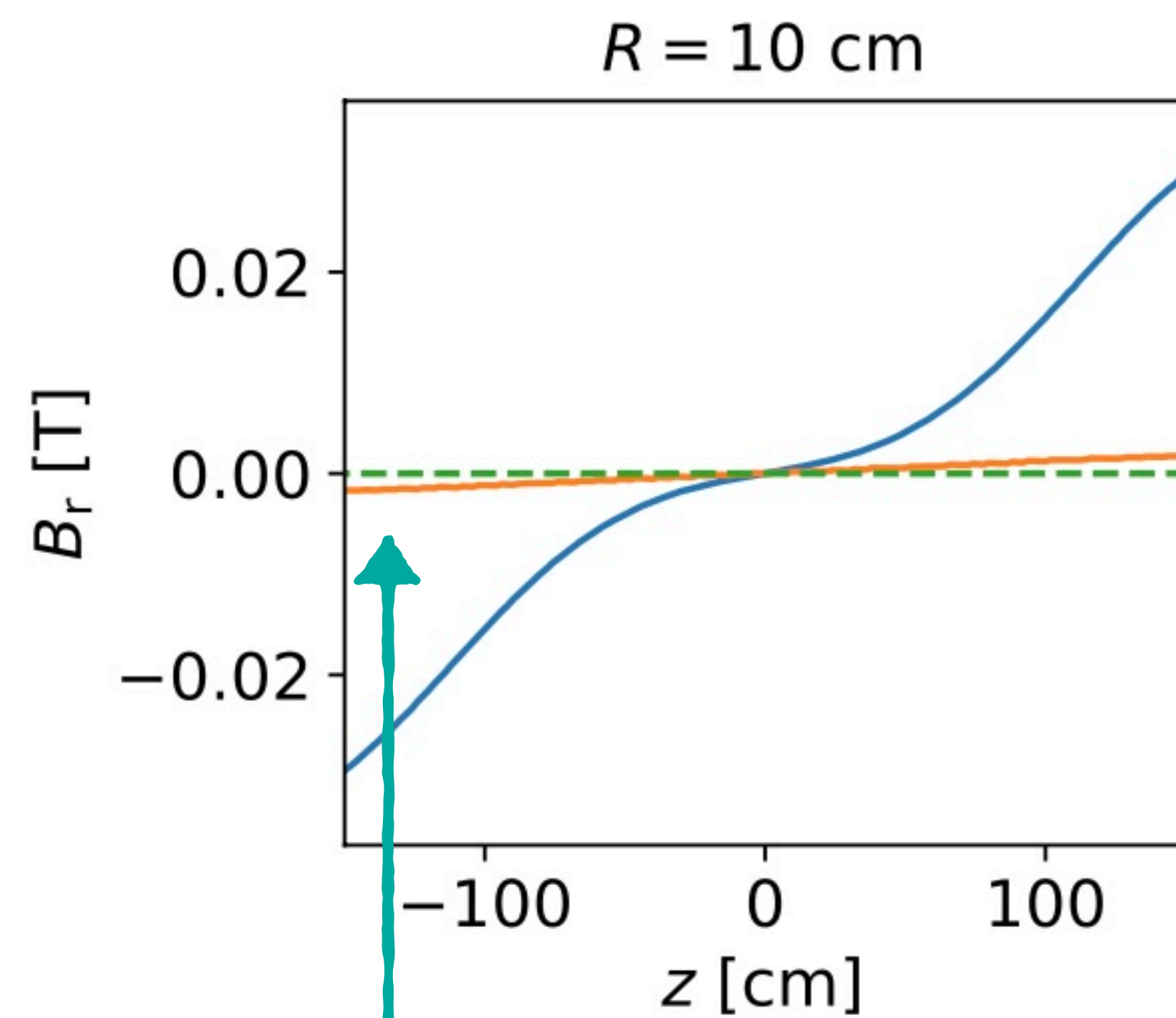
To recap



B_z drops down very quickly with $|z|$

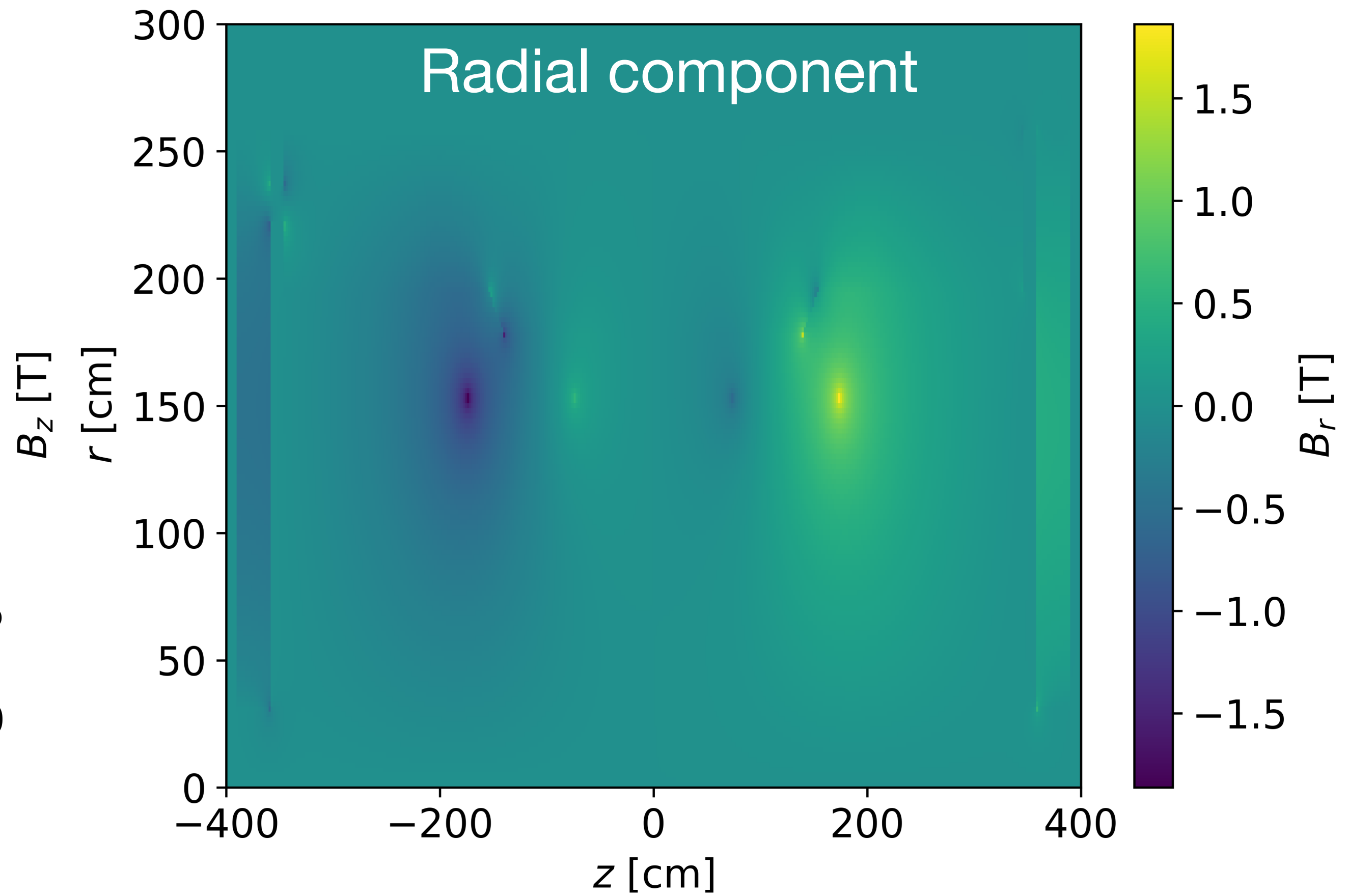
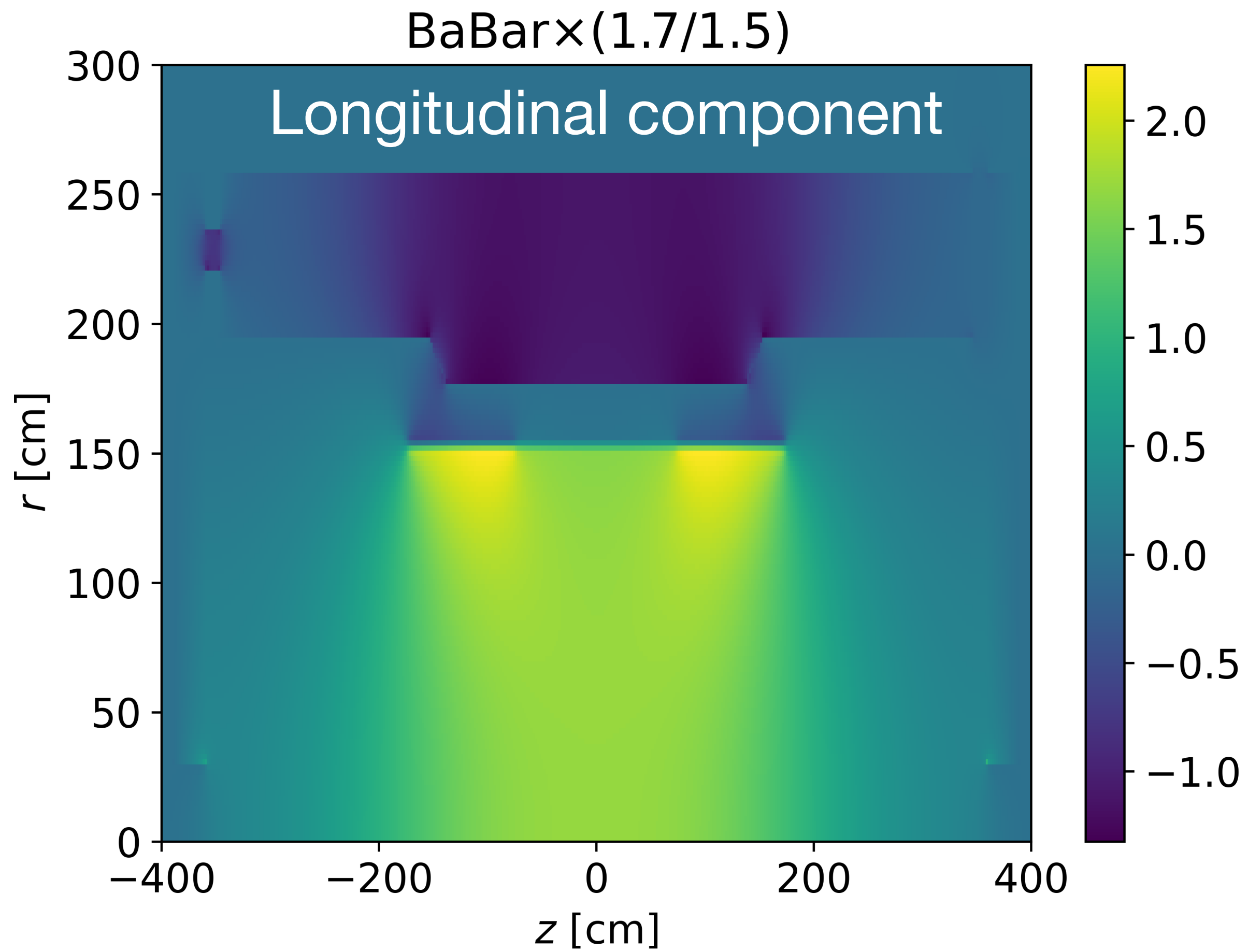


B_z very uniform with R

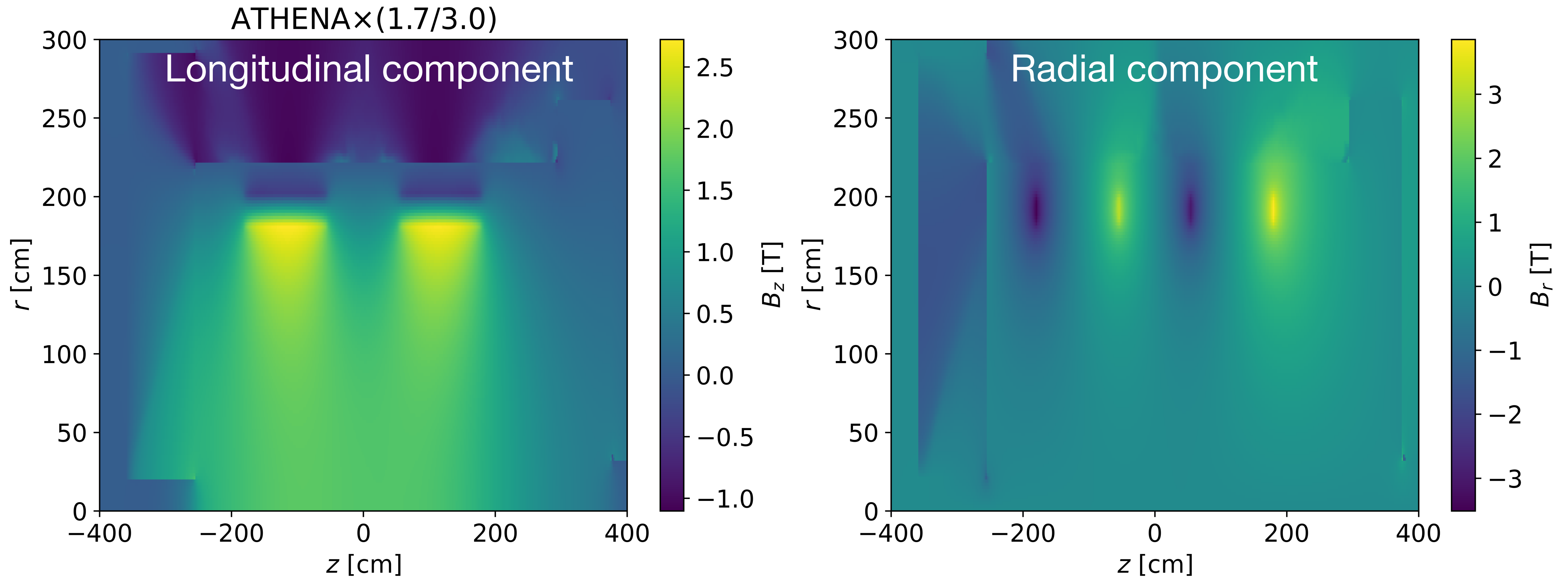


No return field

Example 1: Scaled BaBar (ECCE) map

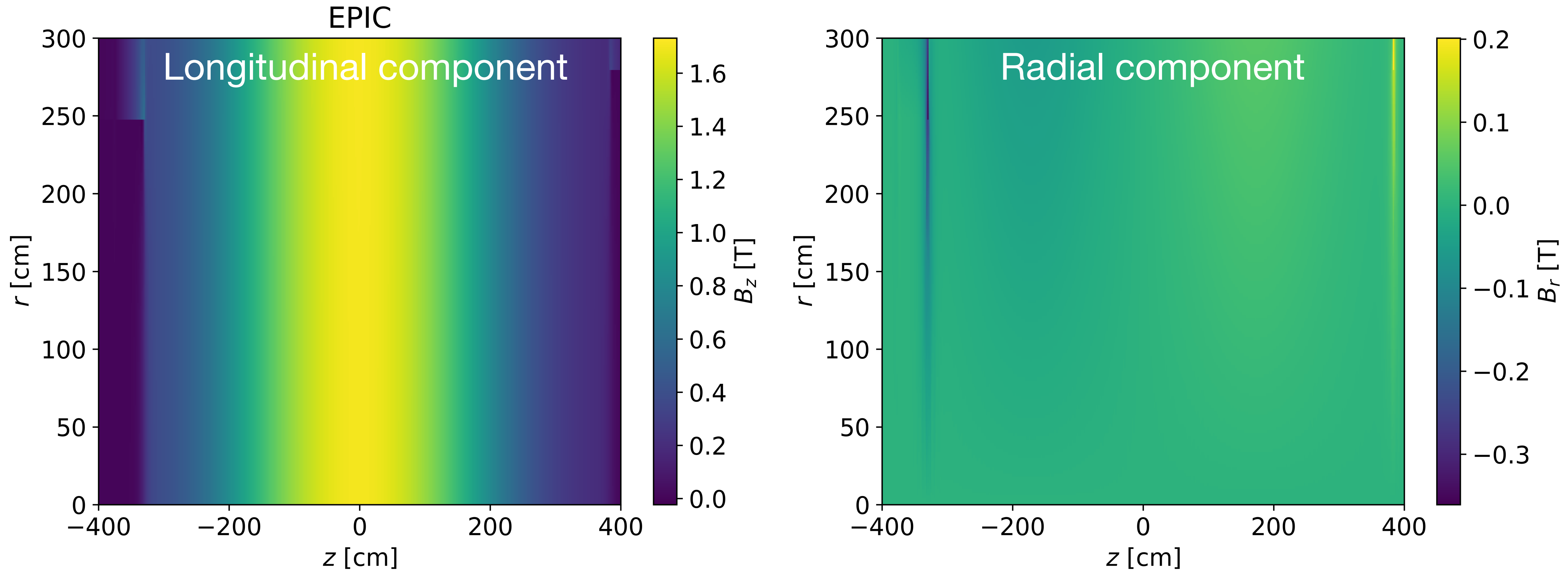


Example 2: Scaled ATHENA map



Hasn't been used in EPIC simulations, but shown for illustrative purposes

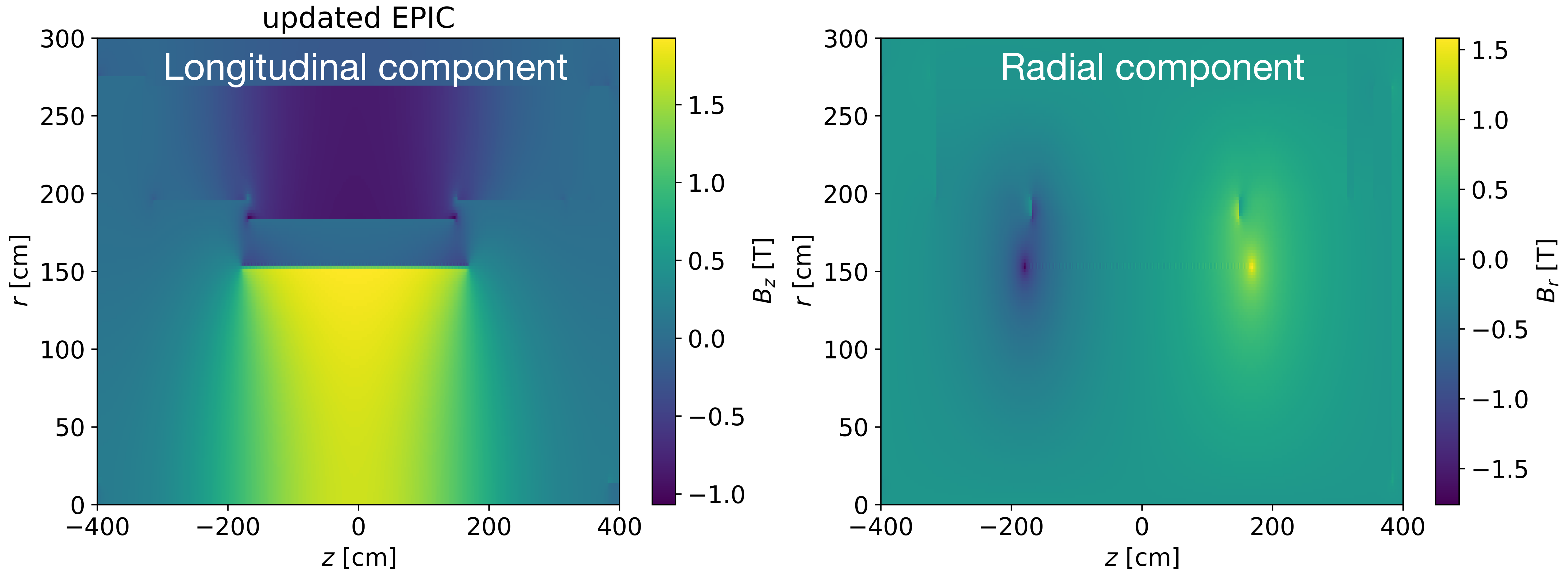
EPIC map



This was brought up in the last tracking meeting and E. Aschenauer committed to get the map fixed.

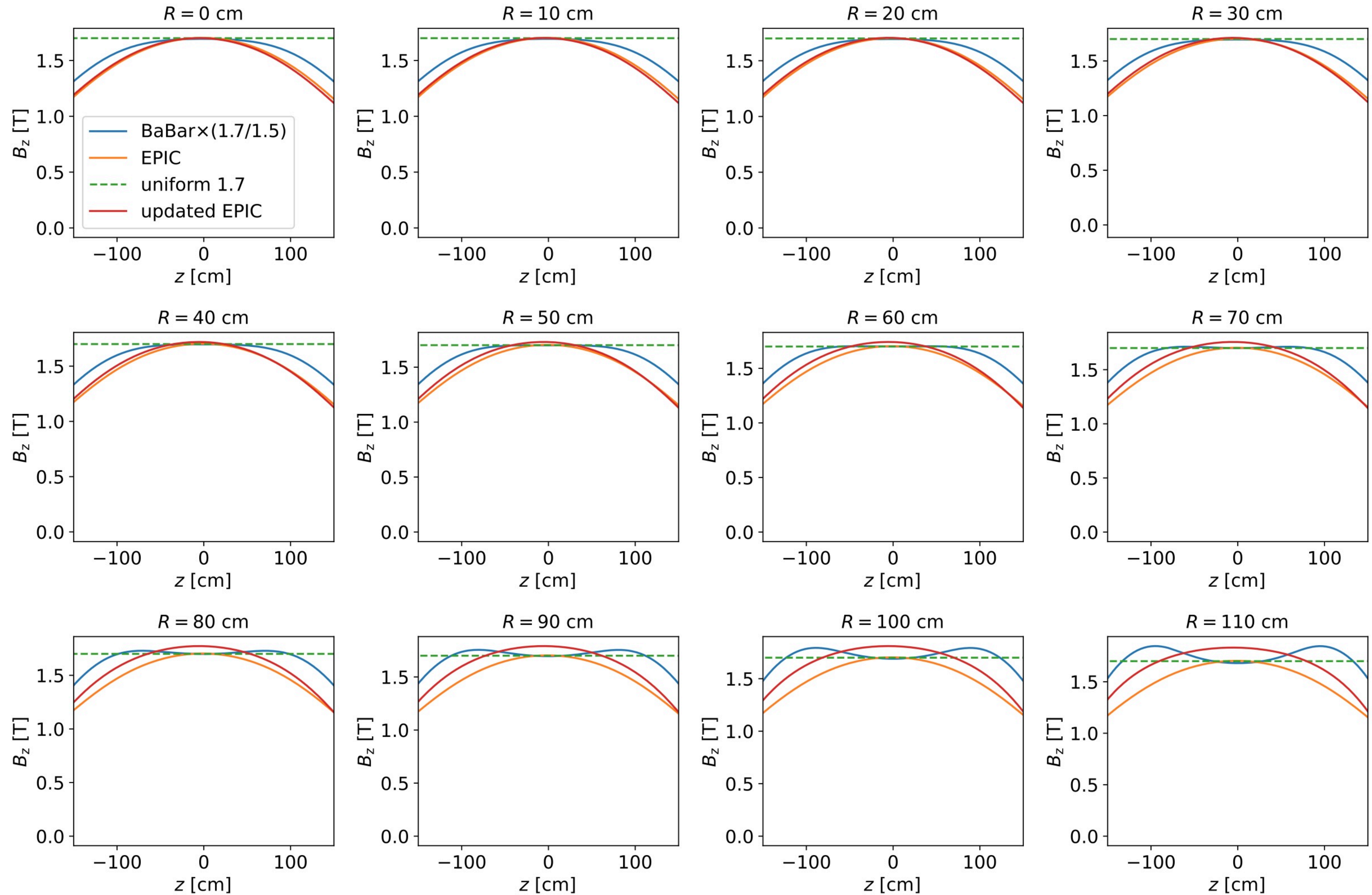
Updated EPIC map

Yesterday the fixed map was circulated

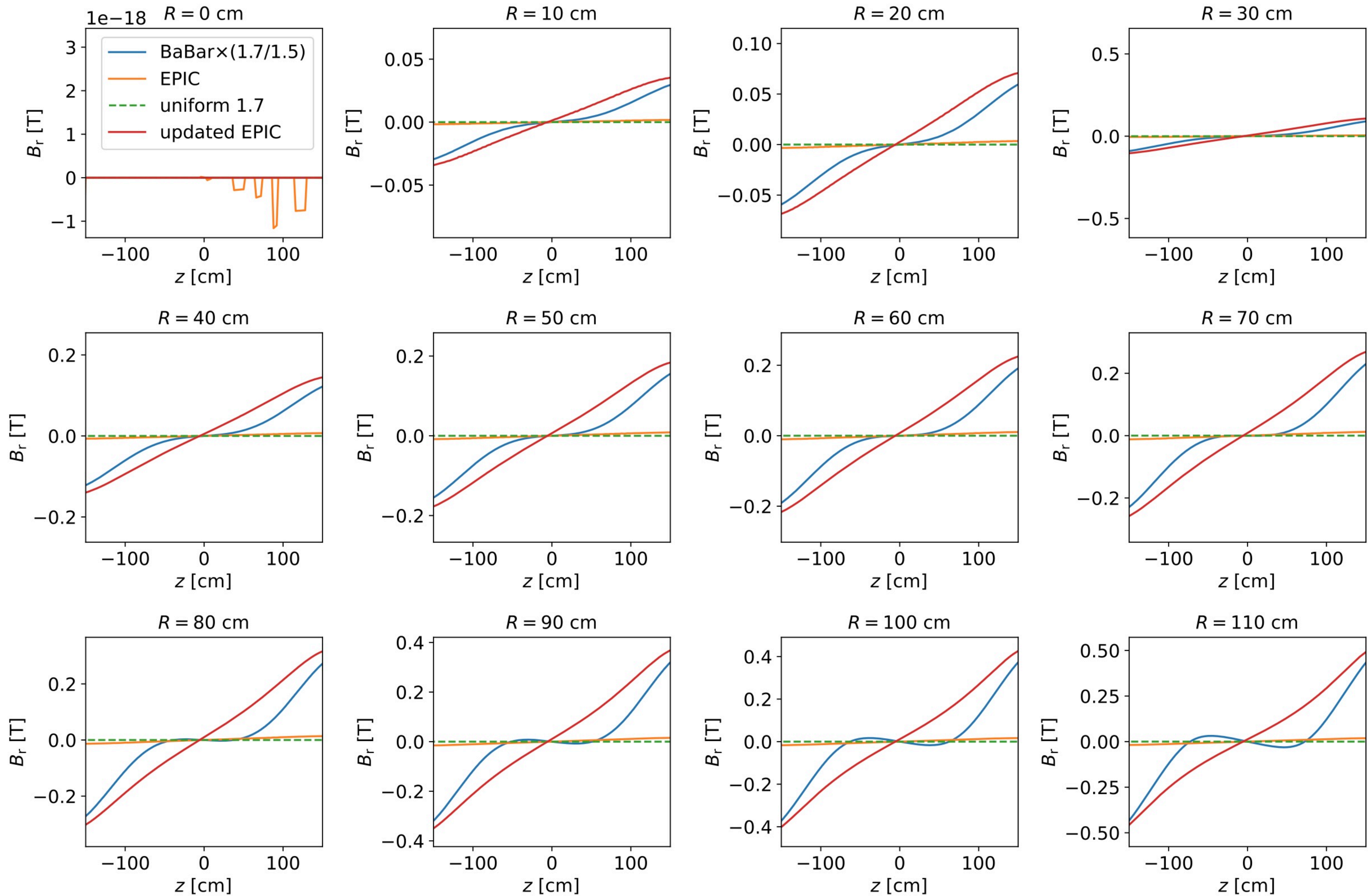


Issue was in the units (field was in mm and cut off very early, but DD4HEP expects cm)

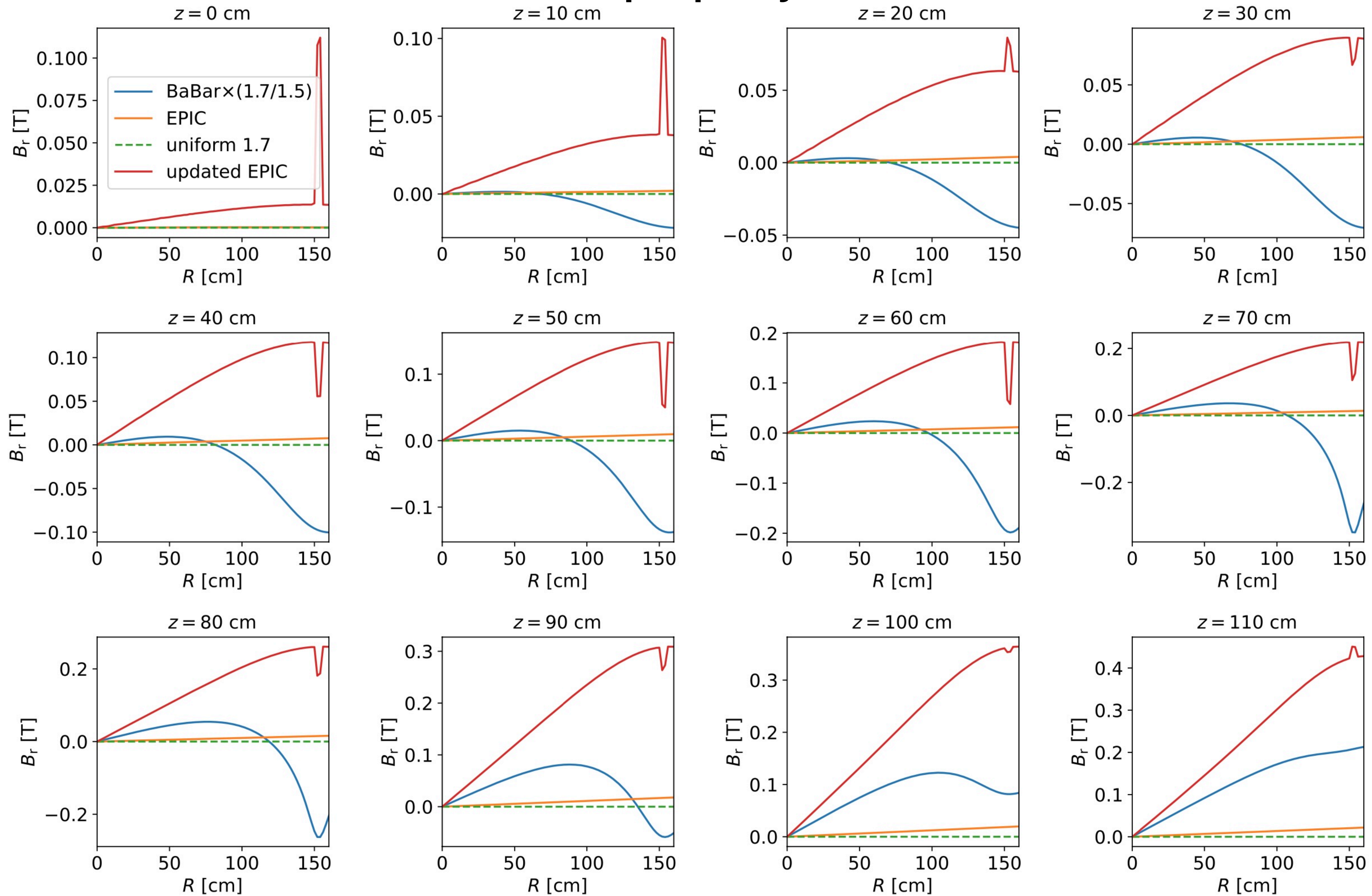
EPIC map: projections



EPIC map: projections



EPIC map: projections



EPIC map: projections

