



BERKELEY LAB

Bringing Science Solutions to the World



U.S. DEPARTMENT
of **ENERGY**

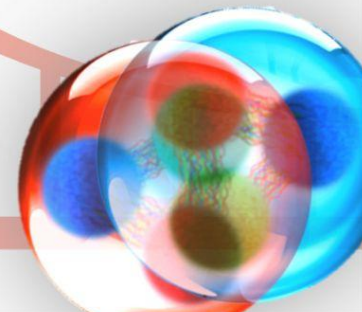
Office of
Science

Welcome!

(start at 9:15 AM PT)

5th International Workshop on Quantitative Challenges in SRC & EMC-Effect Research

Lawrence Berkeley National Laboratory, California
8 - 12 June 2026



The Local Team

LBNL Nuclear Science Division



Dorothy Kenlow



Michele Anne



Shujie Li (‘s cat)
(Relativistic Nuclear
Collisions Program)



Julian Kahlbow
(Low-energy Nuclear
Physics Program)

Safety!

US DOE Facility

- Obey all posted signs

Pedestrian Safety

- Use sidewalk and crosswalks
- Watch your step!
- Do not interact with wild animals

Traffic Safety

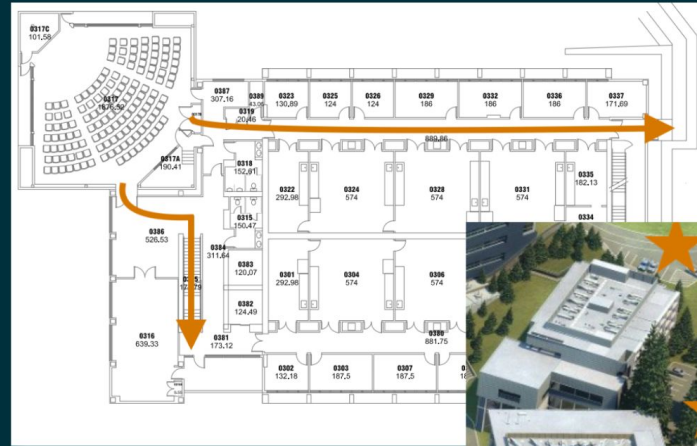
- Speed limit is 15 mph
- Follow traffic, parking and pedestrian signs and markings
- [Toll payments across bay bridges]

Smoking

- In designated areas only



Earthquake response: Drop – Cover – Hold



Exit building and follow walkway to stairs. Go up to assembly area & scan the QR code to check-in



Don't block exits

Go down stairs and out entry doors to assembly area & scan the QR code to check-in

If you need assistance climbing or descending stairs, please let us know before the program begins

- In the Event of an Earthquake -
- Take cover on floor between seats or duck and cover
 - Hold your position until the shaking stops

Exit immediately through either door:

Main exit - Down the stairs and directly outside. Assembly area is on the island under the redwoods

Side exit - Follow the hallway in front of you and exit the building, then along the walkway to the stairs. Go up. Assembly area is the parking lot where the food truck parks.

Evacuation Routes

Venue



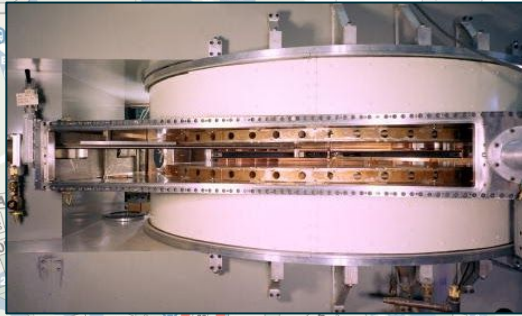
BERKELEY
ACCELERATOR
SPACE
EFFECTS



Lawrence
Hall of
Science



88-Inch
Cyclotron



88

50A
50E
50
50A
50B
50C
50D
50F
50G
50H
50I
50J
50K
50L
50M
50N
50O
50P
50Q
50R
50S
50T
50U
50V
50W
50X
50Y
50Z

33B Blackburn
Canyon Entrance
Entrance
Gate

Guest
House

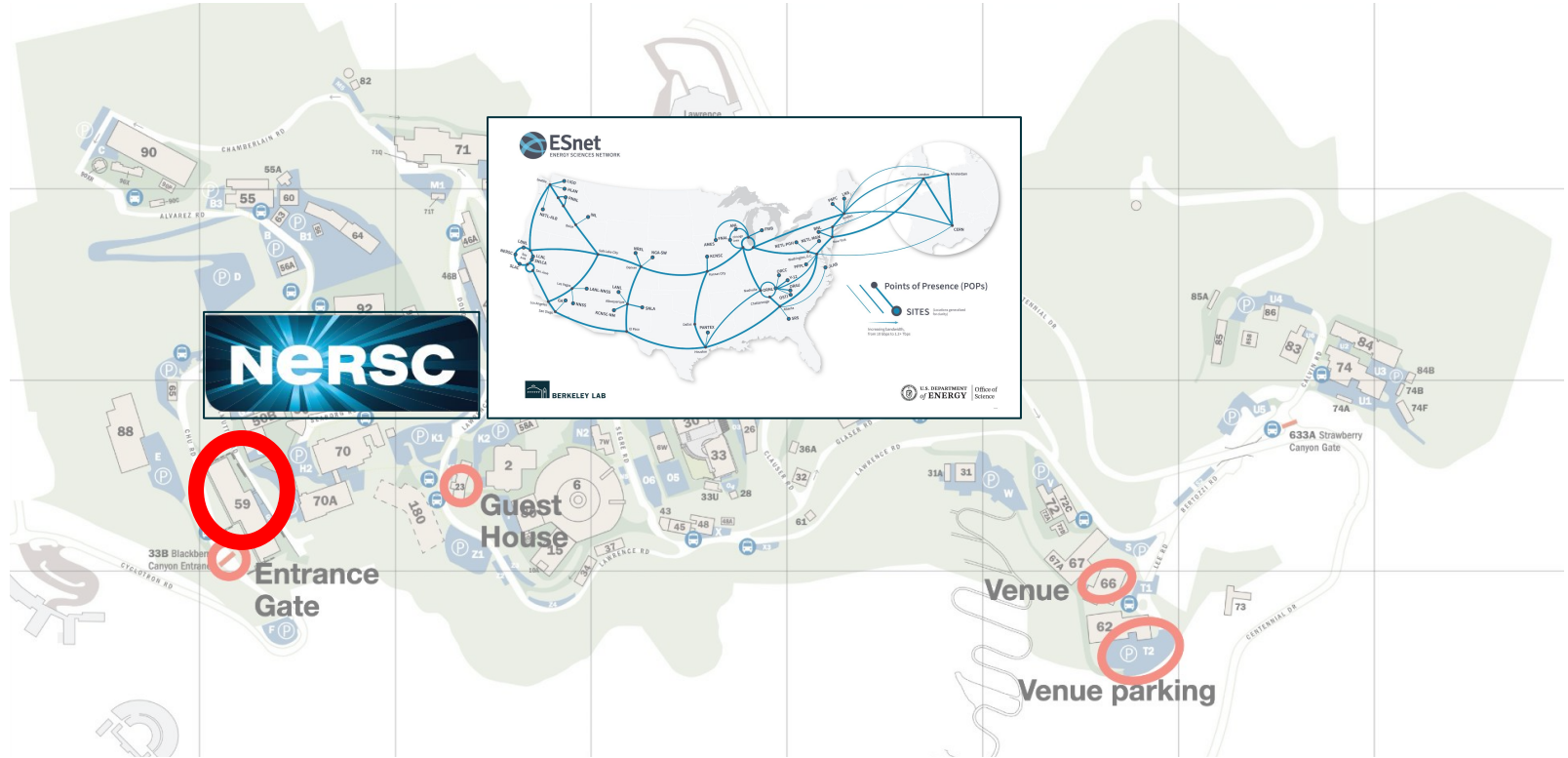
Venue

66

T1

Venue parking
T2

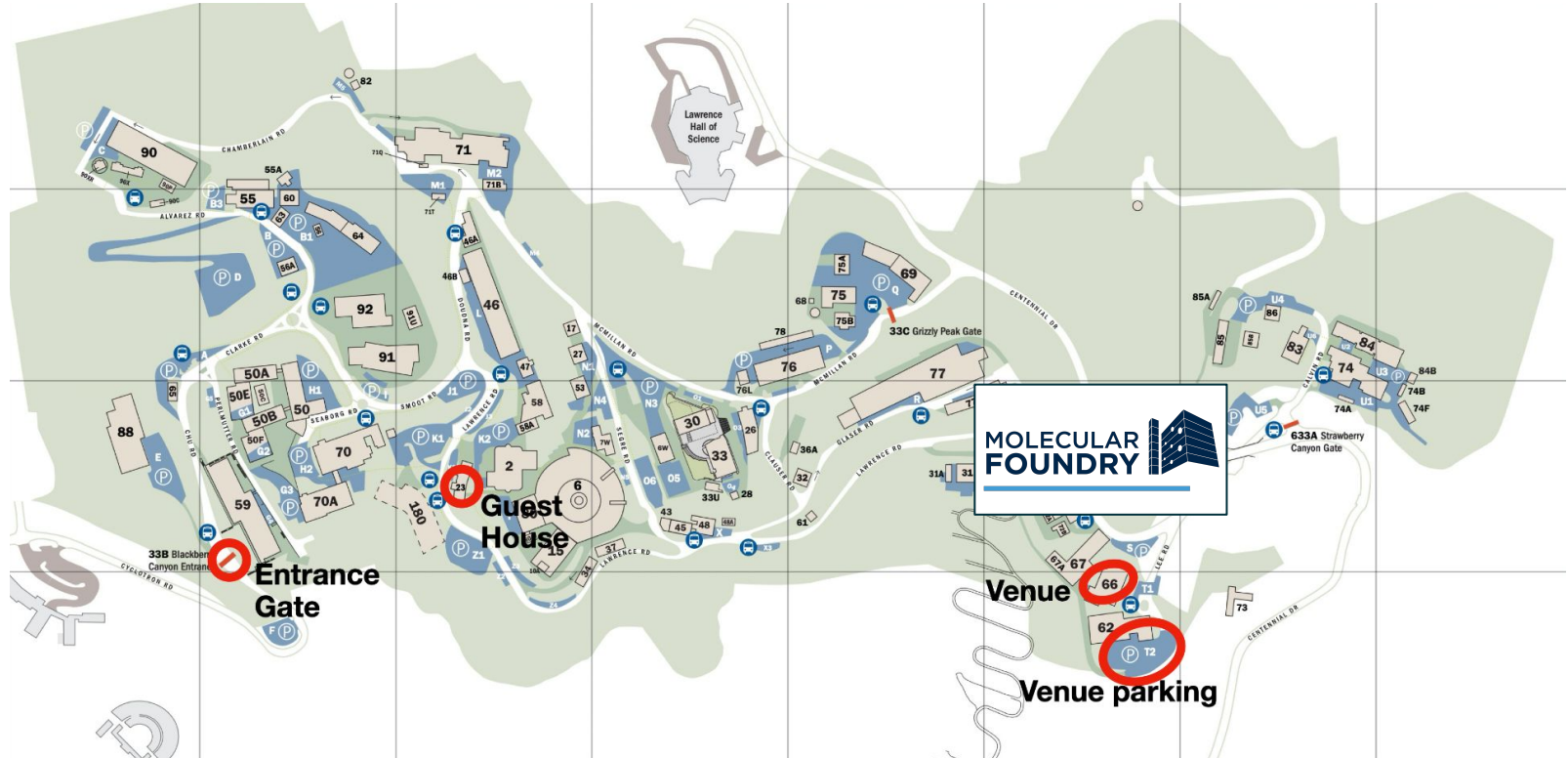
Venue



Venue



Venue



WiFi

- **eduroam**
- **lbni-visitor** (open)

ZOOM

- **Share your presentation from your laptop**
- **Upload to Indico**

Previous Workshops

- **2016:** MIT (USA)
- **2019:** MIT (USA)
- **2021:** remote (MIT/JLab)
- **2023:** CEA Saclay (France)

Long Range Outlook for Short-Range Correlations

N. Fomin,¹ O. Hen,² J. Kahlbow,³ D. Nguyen,¹ J. Pybus,⁴ N. Rocco,⁵
M. Sargsian,⁶ S. N. Santiesteban,⁷ R. Weiss,⁸ D. W. Higinbotham,⁹ L. Weinstein,¹⁰
AND D. Adhikari,¹¹ H. Albataineh,¹² M. Alvioli,¹³ L. Andreoli,¹³ J. Arrington,³ C. Ayerbe Gayoso,¹⁰
A. B. Balantekin,¹⁴ C. Bertulani,¹⁵ H. Bhatt,¹⁶ S. Bhattarai,¹⁷ W. J. Briscoe,¹⁸ S. Chatterjee,¹⁹ H. Chinchay,⁷
E. O. Cohn,²⁰ W. Cosyn,⁹ S. Covrig Dusa,⁹ N. Dashyan,²¹ B. R. Devkota,¹⁶ M. Duer,²² B. Duran,²³
M. Elaasar,²⁴ C. Fanelli,²⁵ M. Farooq,⁷ I. P. Fernando,²⁶ C. Fogler,¹⁰ F. Fornetti,^{27, 28} T. Frederico,²⁹
D. Gaskell,⁹ P. Gautam,²⁶ P. Ghoshal,⁹ T. J. Hague,⁹ J. O. Hansen,⁹ F. Hauenstein,⁹ C. R. Ji,³⁰ H. S. Jo,³¹
M. Junaid,³² D. Keller,²⁶ T. V. Kolar,³³ I. Korover,³⁴ A. Lagni,²² C. Lama,⁷ S. Li,³ V. E. Lyubovitskij,³⁵
R. M. Marinaro III,³⁶ M. Mazouz,³⁷ M. D. McCaughan,⁹ B. McKinnon,³⁸ G. Miller,³⁹ T. Mineeva,⁴⁰
A. Mkrtchyan,²¹ H. Mkrtchyan,²¹ P. Monaghan,³⁶ C. Morean,⁹ S. A. Nadeshani,¹⁶ G. W. Nuwan Chaminda,²⁶
E. Pace,⁴¹ B. D. Pandey,⁴² I. Parshkin,³⁴ S. Pastore,⁸ M. Patsyuk,⁴³ C. Paudel,²³ E. Piasetzky,³⁴
J. Poudel,⁹ H. Qi,² S. Regmi,¹⁷ M. Rinaldi,²⁸ D. Romanov,⁹ G. Salmè,⁴⁴ A. Schmidt,¹⁸ M. H. Shabestari,⁴⁵
A. Shahinyan,²¹ A. Sharda,¹ A. Somov,⁹ I. Strakovsky,¹⁸ H. Szumila-Vance,⁶ V. Tadevosyan,²¹ B. Tamang,¹⁶
R. Wagner,³⁴ U. Weerasinghe,¹⁶ N. Wright,² E. A. Wrightson,¹⁶ H. Voskanyan,²¹ Z. Ye,⁴⁶ and B. Yu⁴⁷

- **2026:** LBNL



Julian Kahlbow



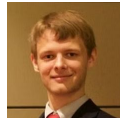
Nadia Fomin



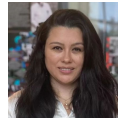
Or Hen



Dien Nguyen



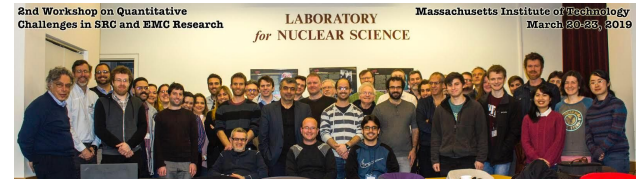
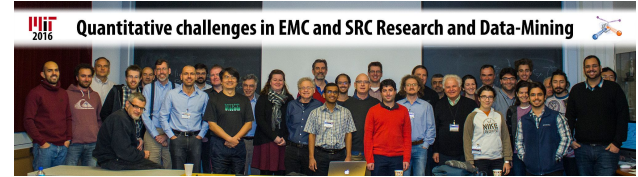
Jackson Pybus



Nathaly Santiesteban



Ronen Weiss



Program

Addressing critical questions in SRC and EMC-Effect Research, and charting a way forward through productive discussions

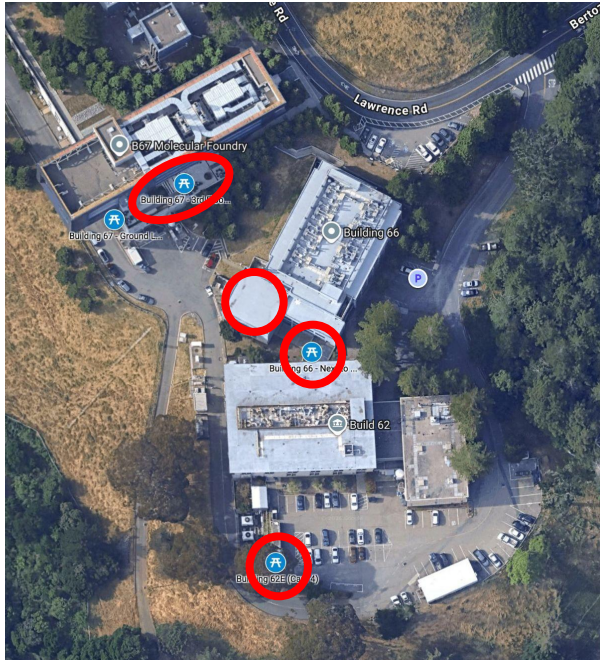
Monday	Tuesday	Wednesday	Thursday	Friday
2N SRC Properties Lawrence Weinstein	SRC Universality Or Hen	Few-body Systems Axel Schmidt	3N SRC SRC/EMC Eli Piassetzky	SRC/EMC
	NSD Colloquium @ 11:30am Photo?	Free afternoon (no lunch)	Photo? Casual Dinner @ Jupiter (Berkeley Downtown), 6pm -> sign up during breaks	Early close

Thank You

Questions?

Lunch

- Grab a lunch box in the lobby
- Vegetarian options:
approach Dorothy/Michele
- Seating areas: opposite conference room +
outside patios



*Express interest for social dinner on Thu, 6pm, at “Jupiter”
-> List at registration desk*

If you'd like more choice: Food trucks at B91 (or Downtown)

