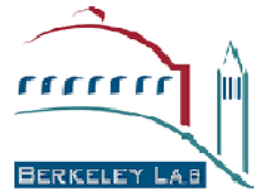


Updates

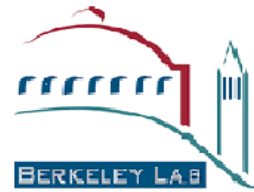


Lab still in Pilot 2D

- 1750 enters per day
- NSD has 47 slots per day
 - Approved / Tom's list
 - Weekly symptom check
 - LBL0012
 - COVID WPC

*** LBL0014 is recommended now but will be required at the end of January 2021**

Updates



New COVID Policy (Pub 3000 Chapter 1)

Affiliates, Users, Vendors, and Non-construction contractors (AUVN)

- Three risk based tiers (Low, Medium, High)
- Comparison between Alameda County and AUVN origin
- Medium and High require Division Director approval
- High requires 14-day quarantine or “quarantine equivalency”

Lab Business Travel

- 6 Categories (4 require COO approval)
- WPC required for all
- UCB and Richmond Field Station (RFS) exempt (unless a reimbursement will be submitted)

Chemical Management



All hazardous materials are required to be included in the CMS, with the following exceptions:

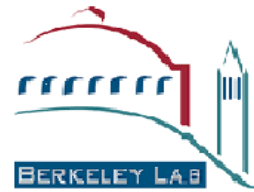
- i. Biochemical materials that have been determined to be nonhazardous
- ii. Research-produced chemicals and mixtures
- iii. **Chemicals or chemical products transferred to secondary containers.**
- iv. Radiological materials
- v. Chemicals transferred to waste containers
- vi. Individual components of prepackaged chemical kits
- vii. Consumer products, which can be excluded from the CMS if their usage is consistent with how the manufacturer intends the average consumer to use the product.



All consumer adhesives and sealants must be inventoried.
All gas cylinders shall be inventoried.

Containers must be entered into the CMS as soon as possible and removed from or disposed of in the CMS when the materials have been used up, disposed of, or taken off site.

Home Safety



Fires

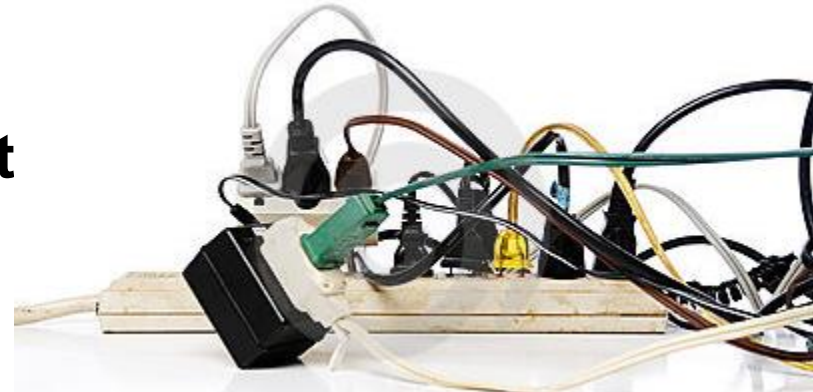
Candles



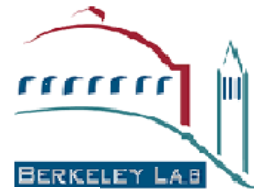
Cooking



Electrical Outlet (Shock)



Home Safety



Fire Safety

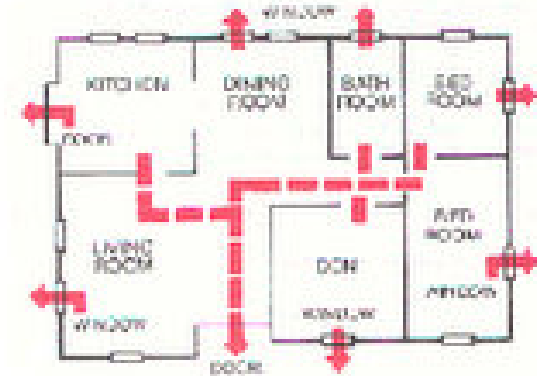
Fire Extinguisher



Smoke Detectors



Fire Safety Plan



Remember – You don't need a flame to start a fire

Electrical Safety

- Appliances plugged directly into wall receptacle
- GFCIs (Test Monthly)
- Check electrical cords and power strips



Questions?