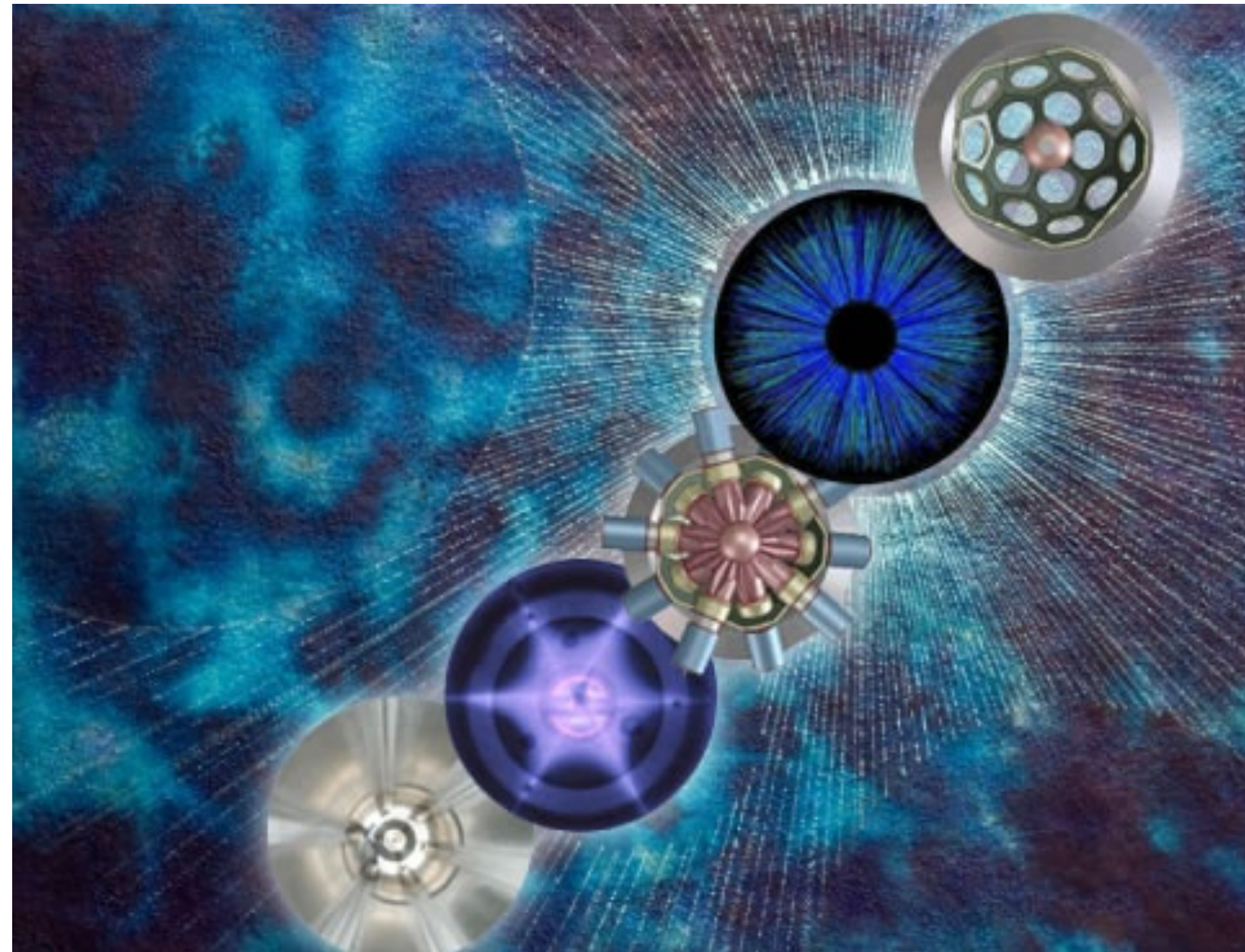


Nuclear Science Division Staff Meeting - 02/08/2022



Agenda

NSD Staff Meeting



Tuesday 8 Feb 2022, 12:00 → 13:00 US/Pacific

Tight Schedule!

Description Zoom Meeting <https://lbnl.zoom.us/j/792948648?pwd=RGNFZ1NXR2VQRVlpalhGUnRaQmNMdz09>

Meeting ID: 792 948 648 Password: 334258

Find your local number: <https://lbnl.zoom.us/j/792948648?pwd=RGNFZ1NXR2VQRVlpalhGUnRaQmNMdz09>

12:00 → 12:05 **Announcement**
Speaker: ~~Andre Walker-Loud~~ Xin Dong / Mateusz Ploskon

🕒 5m

12:05 → 12:15 **Physical Sciences Announcement**
Speaker: Natalie Roe

🕒 10m

12:15 → 12:25 **Safety**
Speaker: Jeff Bramble (NSD)

🕒 10m

Updates-34.pdf

12:25 → 12:40 **Diversity, Equity and Inclusion**
Speakers: Ernst Sichtermann, Heather Crawford, Mark Bandstra, Tom Gallant (LBNL)

🕒 15m

12:40 → 13:00 **The future Jefferson Lab program in NSD**
Speaker: John Arrington

🕒 20m

Upcoming Events

Monday	Tuesday	Wednesday	Thursday	Friday
7	8 NSD Staff Meet. (TODAY)	9 Brown Bag Instr. 12 - 1pm HIT 3:30 - 4:30	10 SciDAC-5 LOI due @ 9am RPM 4 - 5 pm	11 LDRD 1-4pm
14	15 RPM 4 - 5pm	16	17	18
21 Berkeley Colloquia	22 NSD Staff Meeting	23	24	25 LDRD Area Initiatives

Wed. 09 Feb. 12:00pm : Brown Bag Instr.
Katherine Dunne (Stockholm University)
The ALPHA Collaboration and the Axion Plasma Haloscope

Wed. 09 Feb. 3:30pm : HIT
Douglas Higinbotham (JLab)
The End of the Proton Radius Puzzle?

10 Feb. 9:00am : SciDAC-5 Letter of Intent
LBNL Pre-application due (for internal review) at 9am

10 Feb. 4:00pm : RPM - Physics
Aaron Manalaysay (LBNL)
Xe: The Element Designed to Detect Dark Matter

11 Feb. 1-4pm: NSD LDRD presentations

15 Feb. 4:00pm : RPM - Physics
Scott Kravitz (LBNL)
Pushing Dark Matter Detection to the Limit with Machine Learning and Solid Xenon

Upcoming Events

LDRD Reminder

Fri., Feb 11, 1-4PM: 1st NSD LDRD Meeting, ≤ 5 slides

Fri., Feb 25, 2-4PM, Presentation of Area Initiatives

Fri., Mar 11, 1-4PM, 2nd NSD LDRD Meeting, ≤ 5 slides + budget

Wed. Mar 23, get your proposal submitted!

Fri. Mar 25, Lab-Lock-Date