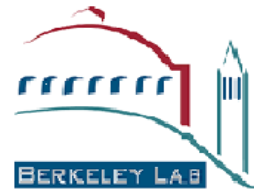
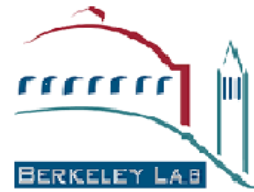


Updates



- **Pub 3000 Ch 46 was updated**
 - **Review before you travel**
 - **Testing may be required when you return**
- **COVID is still with us**
 - **6 positives onsite in last 14 days**
 - **Self-Testing available onsite (B050, 076, Potter St)**
 - **Report positive tests to Medical (x6266)**
 - **COVID WPC Required (No OJT)**
 - **“Fully Vaccinated” (Must upload booster info)**

Pedestrian Safety



- Use Crosswalks



- Use Handrails



- Be mindful of uneven walking surfaces

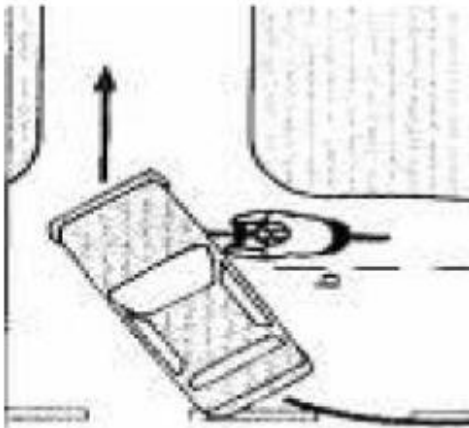
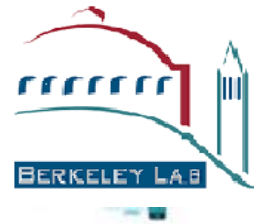
- Make sure drivers see you



- Put your cell phone away



Driver Safety



Motor vehicle rules apply at LBNL

- Be aware of your surroundings.
 - Obey posted speed limits and stop signs.
 - Always use turn signals.
 - Share the road with bicyclists.
 - Yield the right of way to pedestrians.
-
- Watch for pedestrians and bicyclists at/near bus stops. NEVER pass a bus!
 - Look before opening doors when parked along street.
 - Monitor your side and rear view mirrors for motorcyclists practicing lane splitting (legal in California).

Questions

